



## PARTS CATALOG & MAINTENANCE MANUAL

### SC20

23.5' CONTAINER CHASSIS

TANDEM SPRING SLIDER



A Dorsey's More Durable



## PARTS CATALOG & MAINTENANCE SCHEDULE, FIRST RELEASE

Published by PITTS ENTERPRISES, LLC.

Copyright © 2018 by Pitts Enterprises. All rights reserved. This is a copyright work and Pitts Enterprises and its suppliers reserve all work in and to the work. You may not decompile, disassemble, reverse engineer, reproduce, modify, or create derivative works based upon the work without prior consent. You may use the work for your own noncommercial & personal use. Any other use of the work is strictly prohibited.

---

### PITTS ENTERPRISES

TELEPHONE: 800-321-8073

FAX:

WEBSITE: [WWW.PITTSENTERPRISES.NET](http://WWW.PITTSENTERPRISES.NET)

ADDRESS: 5734 Pittsview Hwy, Pittsview, AL 36871

### DORSEY INTERMODAL

TELEPHONE: 855-4-CHASSIS

FAX:

WEBSITE: [WWW.DORSEYINTERMODAL.COM](http://WWW.DORSEYINTERMODAL.COM)

ADDRESS: 5734 Pittsview Hwy, Pittsview, AL 36871

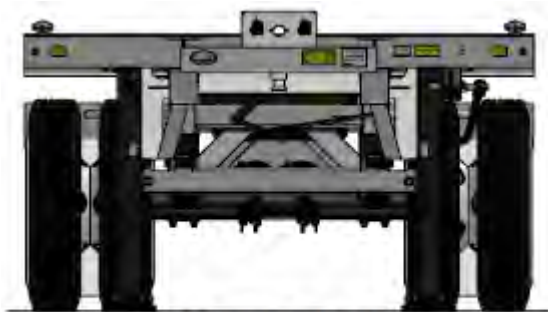
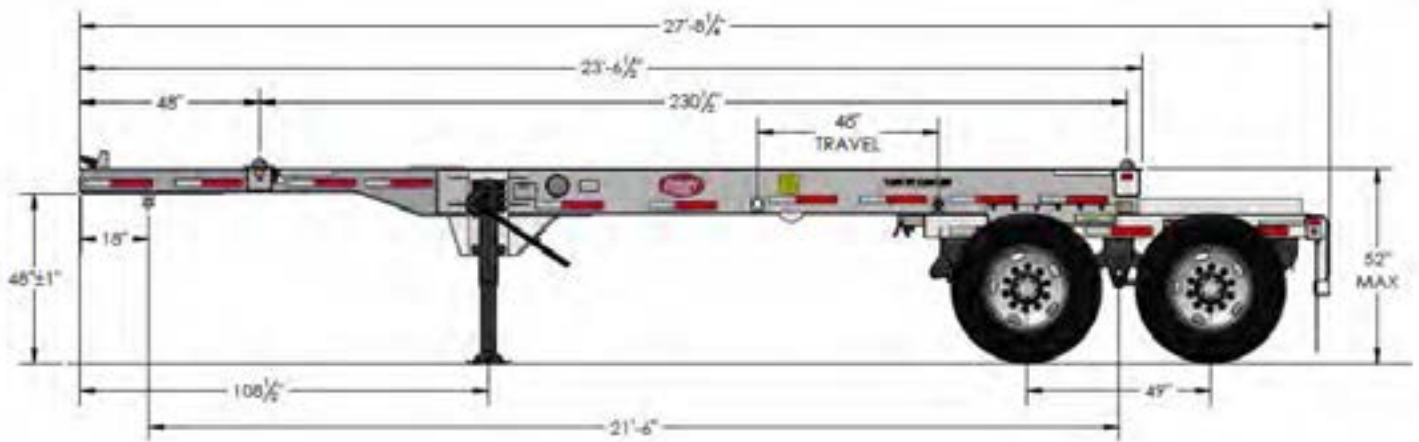
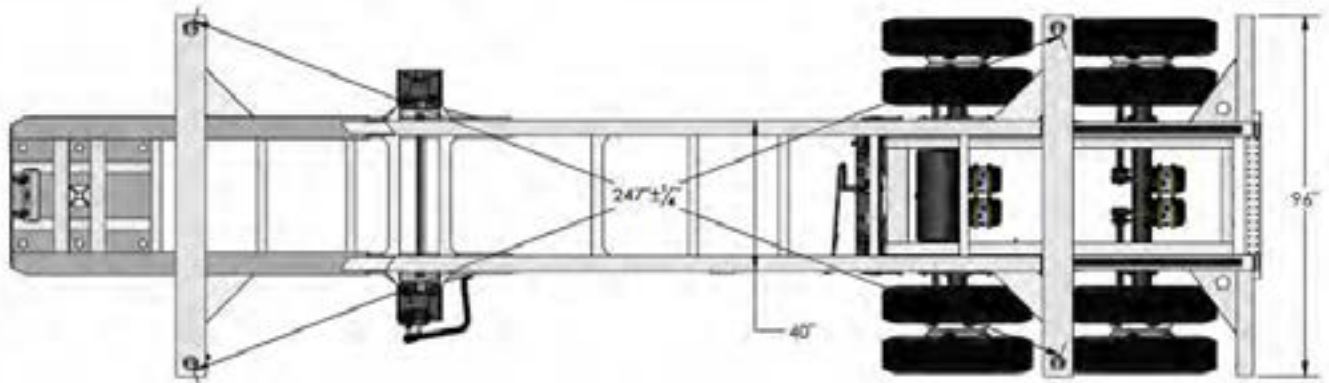


# TABLE OF CONTENTS

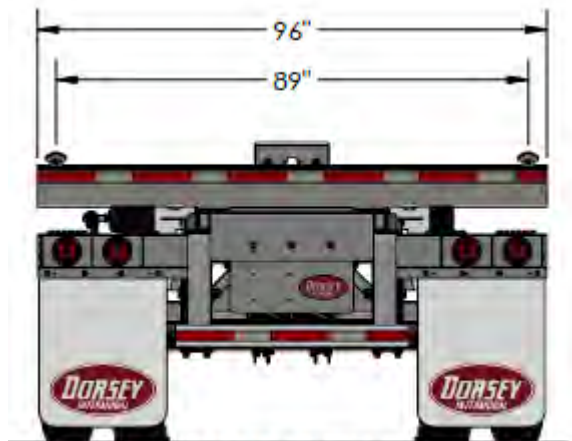
GENERAL DIMENSIONS.....	4
MAINTENANCE SCHEDULE .....	5
MAIN FRAME.....	6
KINGPIN & UPPER COUPLER .....	7
SLIDER ASSEMBLY.....	10
LOCKING DEVICES.....	13
SUSPENSION .....	15
AXLES.....	20
RIM & TIRE .....	23
TIRE INFLATION .....	25
LANDING GEAR.....	27
BRAKE SYSTEM .....	31
ELECTRICAL .....	36
LIGHTING .....	38
DECALS.....	39
WARRANTY.....	40



# GENERAL DIMENSIONS



FRONT VIEW



REAR VIEW



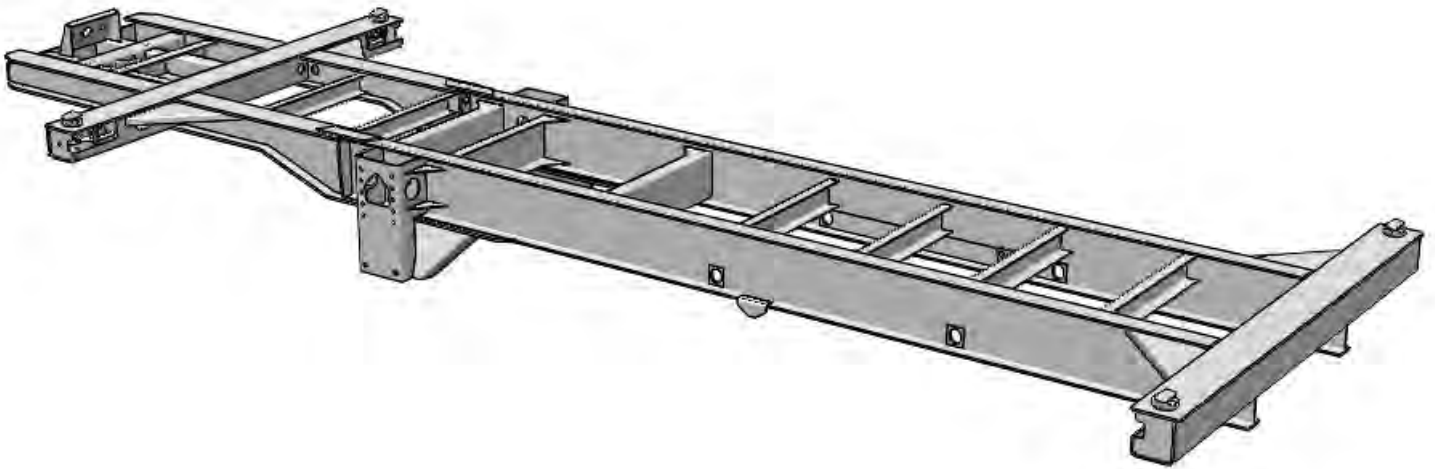
A Dorsey's More Durable

## RECOMMENDED MAINTENANCE SCHEDULE

	INITIAL PERIOD	EVERY MONTH	EVERY THREE MONTHS	EVERY FOUR MONTHS	EVERY SIX MONTHS	EVERY TWELVE MONTHS	AT BRAKE RE-LINE
FRAME STRUCTURE			X				
FRAME FASTENERS		X					
FRAME FASTENERS TORQUE & CORROSION				X			
KINGPIN & UPPER COUPLER			X 30,000				
LOCKING DEVICES			X				
LANDING GEAR LUBRICATION			X				
LANDING GEAR HARDWARE					X		
SUSPENSION STRUCTURE			X				
SUSPENSION FASTENERS TORQUE & CORROSION	1,000			X			
PIN CAGE FASTENERS TORQUE	1,000			X			
HUB CAP & WHEEL SEALS		X					
BRAKE ADJUSTMENT & RE-PACK WHEEL BEARINGS					X		
BRAKE LINING WEAR						X	
CAMSHAFT COMPONENTS & LUBRICATION						X	
BRAKE ADJUSTER & CLEVISES LUBRICATION					X		
BRAKE DRUM						X	
WHEEL END COMPONENTS							X 100,000
BRAKE CHAMBERS & SLACK ADJUSTERS							X 100,000
LUG NUTS & HUB CAP NUTS	50-100	X					
BRAKE CHAMBER PUSH ROD		X					
AIR BRAKE SYSTEM			X				
ELECTRICAL SYSTEM			X				



## MAIN FRAME ASSEMBLY



**VISUAL INSPECTION**  
*BEFORE EACH OPERATION*

**PERIODIC INSPECTION**  
*EVERY THREE MONTHS*

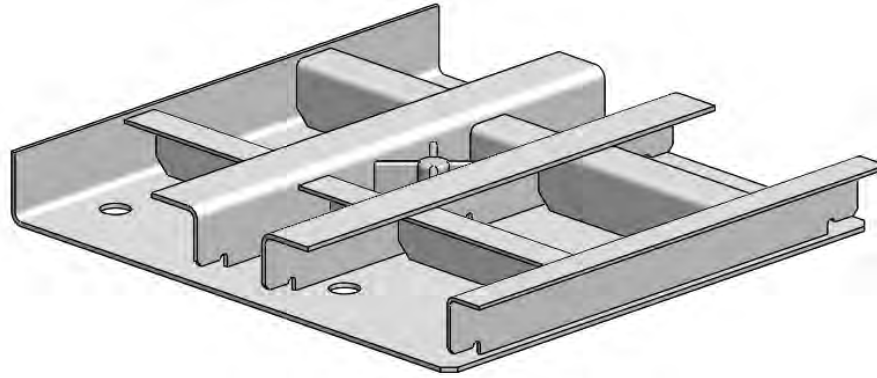
- MISSING COMPONENTS
- FASTENERS
- CRACKED WELDS
- CRACKED METAL
- DISTORTED COMPONENTS
- LOCKING DEVICES FUNCTIONING PROPERLY
- SLIDER LOCK PINS FUNCTIONING PROPERLY
- LARGE AREAS OF MISSING PAINT
- ADNORMAL WEAR

### **WARNING**

DAMAGED PARTS, CRACKED WELDS, OR ADNORMAL WEAR MAY RESULT IN PROPERTY DAMAGE, SERIOUS INJURY, OR DEATH.



## KINGPIN & UPPER COUPLER ASSEMBLY

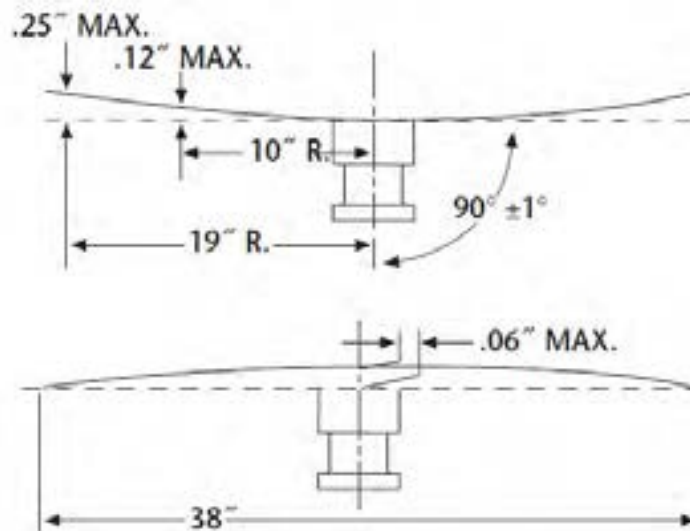


### VISUAL INSPECTION *BEFORE EACH OPERATION*

- CRACKED WELDS
- CRACKED METAL
- DISTORTED COMPONENTS
- LARGE AREAS OF MISSING PAINT
- ADNORMAL WEAR

### PERIODIC INSPECTION *EVERY THREE MONTHS OR 30,000 MILES*

- USING A 48 INCH STRAIGHT EDGE, CHECK THE FLATNESS IN ALL DIRECTIONS. ANY BUMPS, VALLEYS OR WARPING WILL CAUSE UNEVEN LOADING OF THE FIFTH WHEEL, WHICH COULD RESULT IN DAMAGE TO THE TOP PLATE & POOR LOCK LIFE. REPLACE THE CHASSIS UPPER COUPLER PLATE IF FLATNESS EXCEEDS THE SPECIFICATIONS SHOWN BELOW.



## WARNING

DAMAGED PARTS, CRACKED WELDS, OR ADNORMAL WEAR MAY RESULT IN PROPERTY DAMAGE, SERIOUS INJURY, OR DEATH.



A Dorsey's More Durable

# KINGPIN



<p><b>VISUAL INSPECTION</b> <i>BEFORE EACH OPERATION</i></p>	<ul style="list-style-type: none"><li>• CRACKED WELDS</li><li>• CRACKED METAL</li><li>• DISTORTED COMPONENTS</li><li>• ADNORMAL WEAR</li><li>• NICKS</li><li>• GOUGES</li></ul>
<p><b>PERIODIC INSPECTION</b> <i>EVERY THREE MONTHS OR 30,000 MILES</i></p>	<ul style="list-style-type: none"><li>• USING A KINGPIN GAUGE CHECK THE KINGPIN LENGTH.</li><li>• USING A KINGPIN GAUGE CHECK THE WEAR ON BOTH THE 2 INCH AND 2.88 INCH DIAMETERS. REPLACE THE KINGPIN IF THE APPROPRIATE DIAMETERS ENTERS THE GAGE SLOT.</li></ul>



**WARNING**

DAMAGED PARTS, CRACKED WELDS, OR ADNORMAL WEAR MAY RESULT IN PROPERTY DAMAGE, SERIOUS INJURY, OR DEATH.

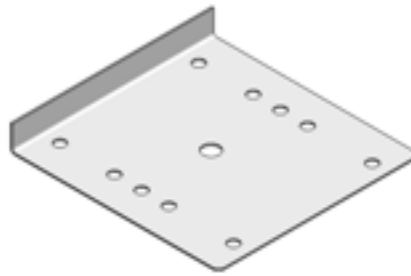




# MAIN FRAME & UPPER COUPLER COMPONENTS



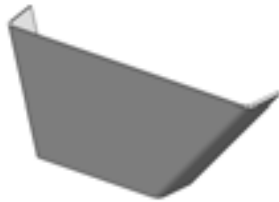
KINGPIN  
FRIDINGEN  
141125303



UPPER COUPLER PLATE  
DORESY INTERMODAL  
17-PRT-AP475



LANDING GEAR BRACKET  
DORESY INTERMODAL  
17-PRT-AP462



LANDING GEAR REINFORCEMENT  
DORESY INTERMODAL  
CURBSIDE: 17-PRT-AP463  
ROADSIDE: 17-PRT-AP464



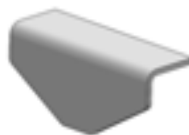
LANDING GEAR CROSS BRACE  
DORESY INTERMODAL  
17-PRT-AP013



LANDING GEAR CLIP  
DORESY INTERMODAL  
17-PRT-AN042



GLADHAND PLATE  
DORESY INTERMODAL  
17-PRT-AP456



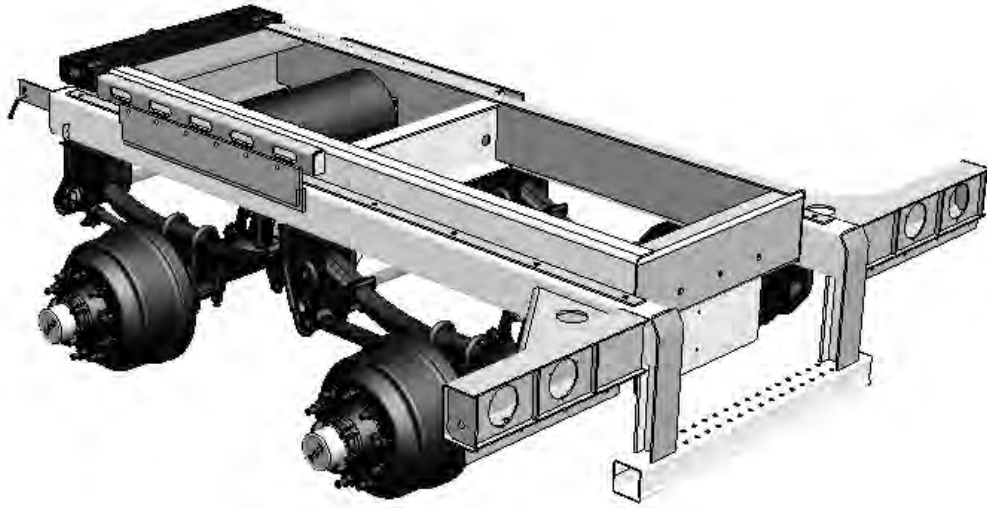
TRIP ANGLE  
DORESY INTERMODAL  
17-PRT-AP465



SLIDER WEAR PLATE  
DORESY INTERMODAL  
17-PRT-AP467



## SLIDER ASSEMBLY



VISUAL INSPECTION  
*BEFORE EACH OPERATION*

PERIODIC INSPECTION  
*EVERY THREE MONTHS*

- MISSING COMPONENTS
- FASTENERS
- CRACKED WELDS
- CRACKED METAL
- DISTORTED COMPONENTS
- LARGE AREAS OF MISSING PAINT
- ADNORMAL WEAR

## WARNING

DAMAGED PARTS, CRACKED WELDS, OR ADNORMAL WEAR MAY  
RESULT IN PROPERTY DAMAGE, SERIOUS INJURY, OR DEATH.



*A Dorsey's More Durable*

# PIN CAGE ASSEMBLY



<p><b>VISUAL INSPECTION</b> <i>BEFORE EACH OPERATION</i></p>	<ul style="list-style-type: none"> <li>• MISSING COMPONENTS</li> <li>• FASTENERS</li> <li>• CRACKED WELDS</li> <li>• CRACKED METAL</li> <li>• DISTORTED COMPONENTS</li> <li>• VERIFY LOCKING PINS FULLY EXTEND &amp; PASS THROUGH THE LOCKING HOLES IN THE MAIN FRAME</li> <li>• ADNORMAL WEAR</li> <li>• REMOVE ANY DEBRIS BETWEEN THE PIN CAGE &amp; MAIN FRAME ASSEMBLY</li> </ul>
<p><b>PERIODIC INSPECTION</b> <i>FIRST 1,000 MILES</i> &amp; <i>EVERY FOUR MONTHS</i></p>	<ul style="list-style-type: none"> <li>• CHECK PIN CAGE &amp; MOUNTING PLATE AT THE FRONT OF THE SLIDER ASSEMBLY FOR DAMAGE.</li> <li>• CHECK MOUNTING FASTENERS TORQUE. TORQUE = 135-150 ft-lb</li> <li>• CHECK LOCKING PINS, LINKS, ROD, &amp; SPRINGS FOR WEAR OR DISTORTION</li> </ul>

## WARNING

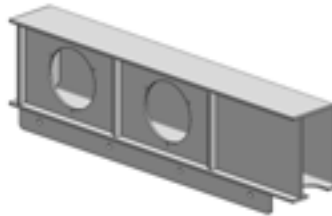
DAMAGED PARTS, CRACKED WELDS, OR ADNORMAL WEAR MAY RESULT IN PROPERTY DAMAGE, SERIOUS INJURY, OR DEATH.



# SLIDER ASSEMBLY COMPONENTS



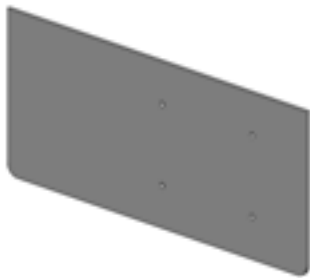
PIN CAGE  
HUTCHENS  
17-PRT-AH986



TAIL LIGHT BAR  
DORSEY INTERMODAL  
CURBSIDE: 17-SUB-AH058  
ROADSIDE: 17-SUB-AH059



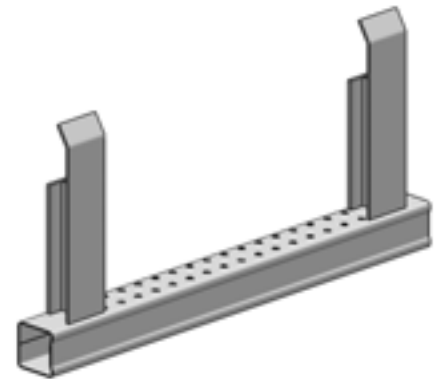
INNER GUIDE  
DORSEY INTERMODAL  
17-PRT-AP498



LICENSE PLATE MOUNT  
DORSEY INTERMODAL  
17-PRT-AP503



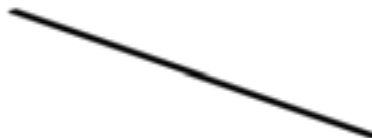
AIR TANK BRACKET  
DORSEY INTERMODAL  
17-PRT-AP511



BUMPER ASSEMBLY  
DORSEY INTERMODAL  
17-SUB-AH060  
TUBE: 17-PRT-AH987



MUD FLAP BRACKET  
DORSEY INTERMODAL  
17-PRT-AP509



SLIDER WEAR PAD  
HUTCHENS  
17-PRT-AP514

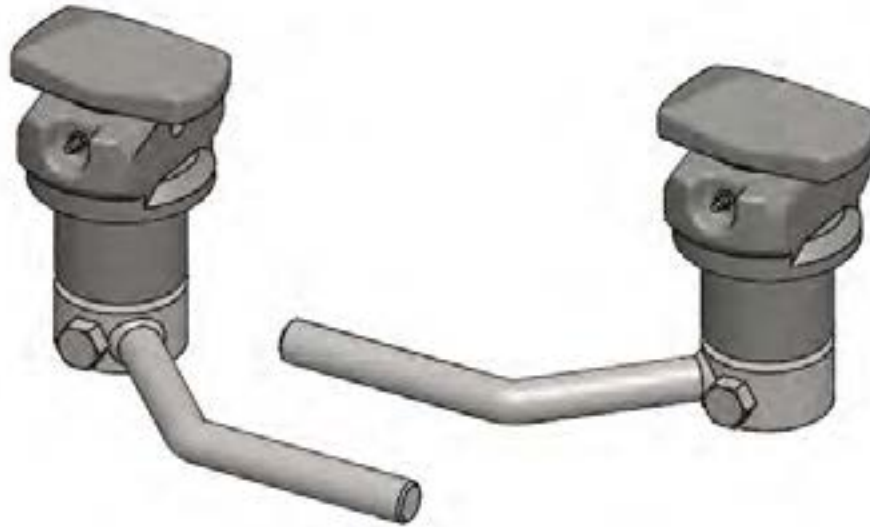


WEAR PAD SCREW  
HUTCHENS  
17-PRT-AJ467





## LOCKING DEVICES



<b>VISUAL INSPECTION</b> <i>BEFORE EACH OPERATION</i>	<ul style="list-style-type: none"><li>• MISSING COMPONENTS</li><li>• FASTENERS</li><li>• CRACKED WELDS</li><li>• CRACK METAL</li><li>• ENSURE TWIST LOCKS ARE RETAINED IN WORKING POSITION &amp; LOCK PROPERLY</li></ul>
<b>PERIODIC INSPECTION</b> <i>ANNUALLY</i>	<ul style="list-style-type: none"><li>• LUBRICATE TWIST LOCKS &amp; ENSURE SMOOTH OPERATION</li></ul>

### **WARNING**

DAMAGED PARTS, CRACKED WELDS, OR ADNORMAL WEAR MAY RESULT IN PROPERTY DAMAGE, SERIOUS INJURY, OR DEATH.



# LOCKING DEVICE COMPONENTS



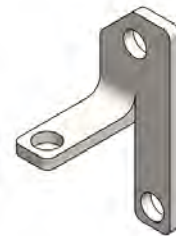
TWIST LOCK—RH  
BUFFERS OR TOCA  
17-PRT-AF412



SAFETY LATCH—RH  
BUFFERS OR TOCA  
17-PRT-AF598



TWIST LOCK—LH  
BUFFERS OR TOCA  
17-PRT-AF413



SAFETY LATCH—LH  
BUFFERS OR TOCA  
17-PRT-AF599



# SUSPENSION



<p><b>VISUAL INSPECTION</b> <i>BEFORE EACH OPERATION</i></p>	<ul style="list-style-type: none"> <li>• MISSING COMPONENTS</li> <li>• BUSHINGS WEAR</li> <li>• FASTENERS</li> <li>• CRACKED WELDS</li> <li>• CRACKED METAL</li> <li>• BROKE OR CRACKED LEAF SPRINGS</li> </ul>
<p><b>INITIAL BREAK IN PERIOD</b> <i>FIRST 1,000 MILES</i></p>	<ul style="list-style-type: none"> <li>• ALL FASTENERS SHOULD BE CHECKED TO ENSURE THAT RECOMMENDED TORQUE VALUES ARE BEING MAINTAINED.</li> </ul>
<p><b>PERIODIC INSPECTION</b> <i>EVERY FOUR MONTHS OR 25,000 MILES</i></p>	<ul style="list-style-type: none"> <li>• ALL FASTENERS SHOULD BE CHECKED TO ENSURE THAT RECOMMENDED TORQUE VALUES ARE BEING MAINTAINED.</li> </ul>

## WARNING

DAMAGED PARTS, CRACKED WELDS, OR ADNORMAL WEAR MAY RESULT IN PROPERTY DAMAGE, SERIOUS INJURY, OR DEATH.

DO NOT WELD LEAF SPRING.

DO NOT OPERATE WITH CRACKED OR BROKEN SPRING.

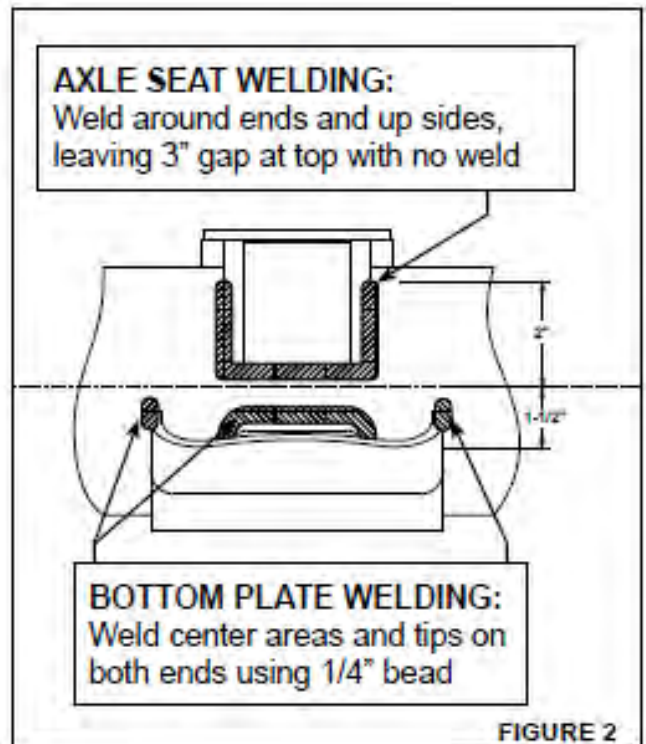
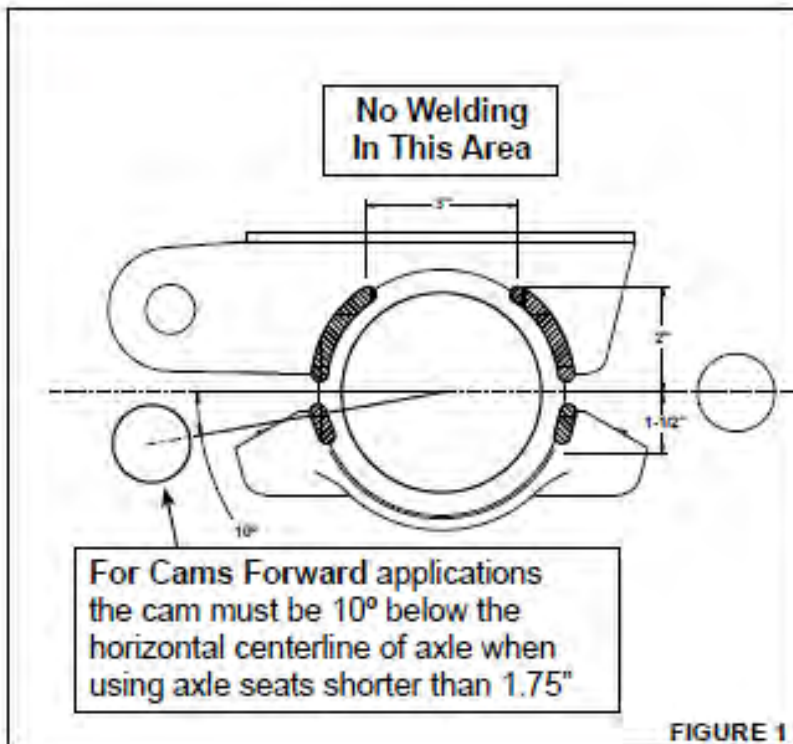


# SUSPENSION

## AXLE SEATS & BOTTOM PLATE WELDING INSTRUCTIONS

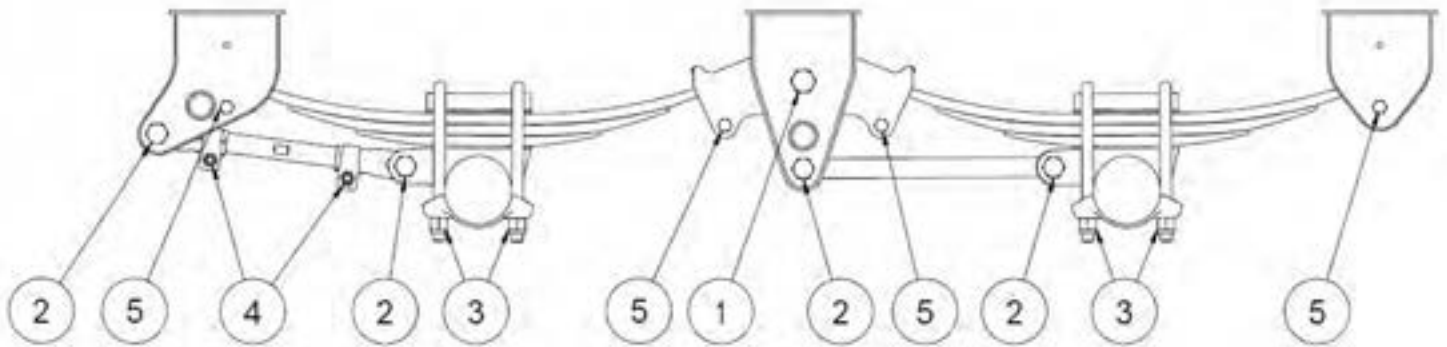
### Overlung 5" Round Axle, Axle Seats and Bottom Plates:

1. Pre-fit Axle Seats and Bottom Plates before welding.
2. All Axle Seats and Bottom Plates MUST be parallel within  $1/32"$  to ensure proper installation and positioning of U-bolts, Springs and Axles.
3. DO NOT weld more than 2" above or 1-1/2" below the horizontal centerline of the axle beam, making sure to leave the proper 3" gap between welds on the Axle Seat (See Figures 9 & 10 below).
4. Weld using AWS E70xx structural welding materials and practices\*.
5. For "cams forward" applications (Figure 1), camshaft position must be 10 degrees below the horizontal centerline of the axle when using spring seats shorter than 1.75".
6. Proceed to Final Assembly Instructions for hardware torque specifications.



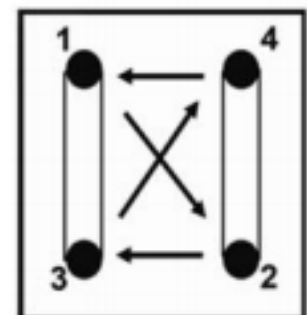


# SUSPENSION TORQUE VALUES



ITEM NO	FASTENER	TORQUE OILED
1	1 1/8" -12—EQUALIZER NUT	590 ft-lb
2	1" -14—RADIUS ROD NUT	540 ft-lb
3	7/8" -14—U-BOLT ASSEMBLY	350 ft-lb
4	5/8" -18—RADIUS ROD CLAMP NUT	130 ft-lb
5	5/8" -18—SPRING RETAINER NUT	35 ft-lb

1. FOR CONSISTENT CLAMP LOADS, LUBRICATE ALL FASTENERS & TORQUE TO OILED SPECIFICATIONS PER THE AXN TORQUE DECAL (AX-MS-TD-06-14).
2. U-BOLT NUTS MUST BE TIGHTENED IN ALTERNATING PATTERN.
3. AXN TORQUE DECAL (AX-MS-TD-06-14) SHOULD BE APPLIED ON THE ROADSIDE OF THE TRAILER IN CLEAR VIEW, ABOVE THE INSTALLED SUSPENSION.
4. AFTER INITIAL BREAK IN PERIOD, CHECK FASTENERS TO ENSURE PROPERLY MAINTAINED TORQUE.

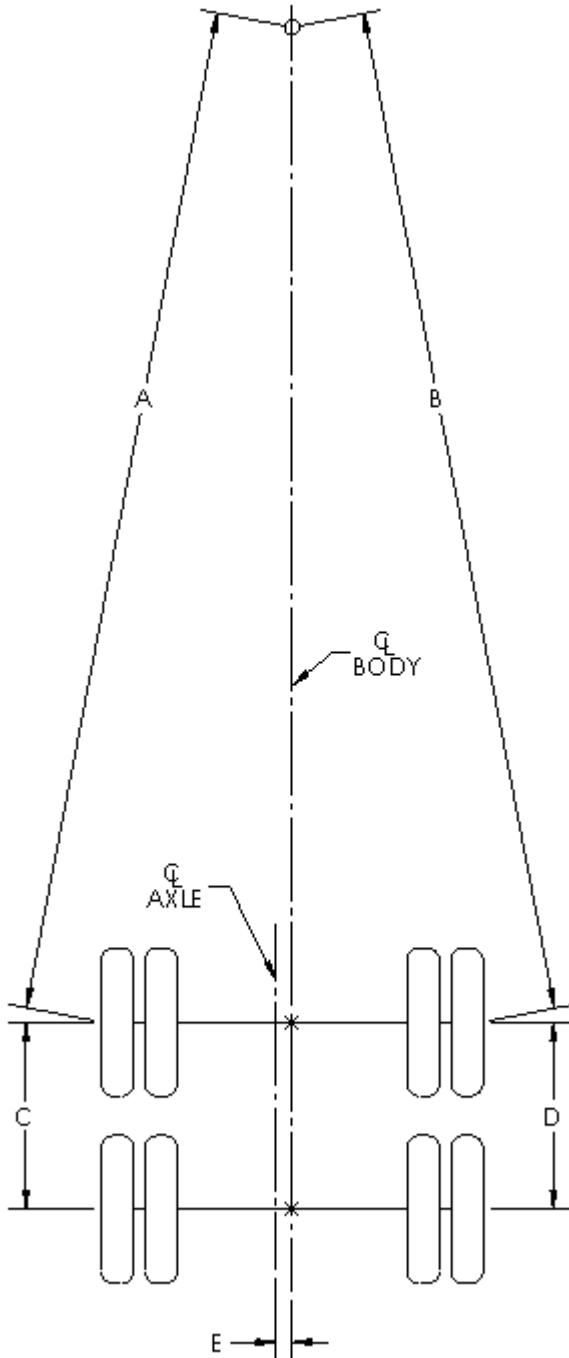


U-BOLT  
TIGHTENING  
PATTERN



# SUSPENSION

## ALIGNMENT



1. BEFORE TAKING AXLE ALIGNMENT MEASUREMENTS, MAKE SURE THE TRAILER IS UNLOADED AND FREE THE SUSPENSION OF ANY "BINDS" BY PUSHING THE TRAILER BACKWARD & THEN PULLING THE TRAILER FORWARD. WHILE PULLING THE TRAILER FORWARD ON A LEVEL FLOOR, APPLY THE BRAKES & RELEASE. THIS WILL ASSURE THAT AN ADJUSTABLE UNDERCARRIAFE IS IN ITS REARMOST LOCKED POSITION. THE TRAILER MUST BE LEVEL FROM SIDE TO SIDE AS WELL AS FROM FRONT TO REAR.
2. USE AXLE END EXTENDERS OR REMOVE THE OUTER WHEELS AND ANYTHING ELSE THAT MAY BE IN THE OF THE MEASURING TAPE TO ACHIEVE A STRAIGHT LINE FROM THE KINGPIN TO THE AXLE ENDS.
3. MEASURE DISTANCES A & B FROM THE KINGPIN TO FRONT AXLE. THESE MUST BE WITHIN 1/8 INCH OF EACH OTHER. MEASURE DISTANCES C & D BETWEEN AXLES. NOTE THAT ALL CURRENT AVAILABLE TRAILER AXLES HAVE DIMPLES OR RECESSES AT THE CENTER OF THE AXLE SPINDLE. THESE ALSO MUST BE EQUAL WITHIN 1/16 INCH OF EACH OTHER. DETERMINE LATERAL CENTERLINE OF TRAILER BODY & AXLES. DISTANCE E SHOULD NOT EXCEED 1/4 INCH FOR EITHER AXLE.

REFER TO TTMA RP NO. 71-15 FOR MORE DETAILS.

### CAUTION

ALWAYS MEASURE TO THE FRONT AXLE ENDS FOR ACCURATE ALIGNMENT.

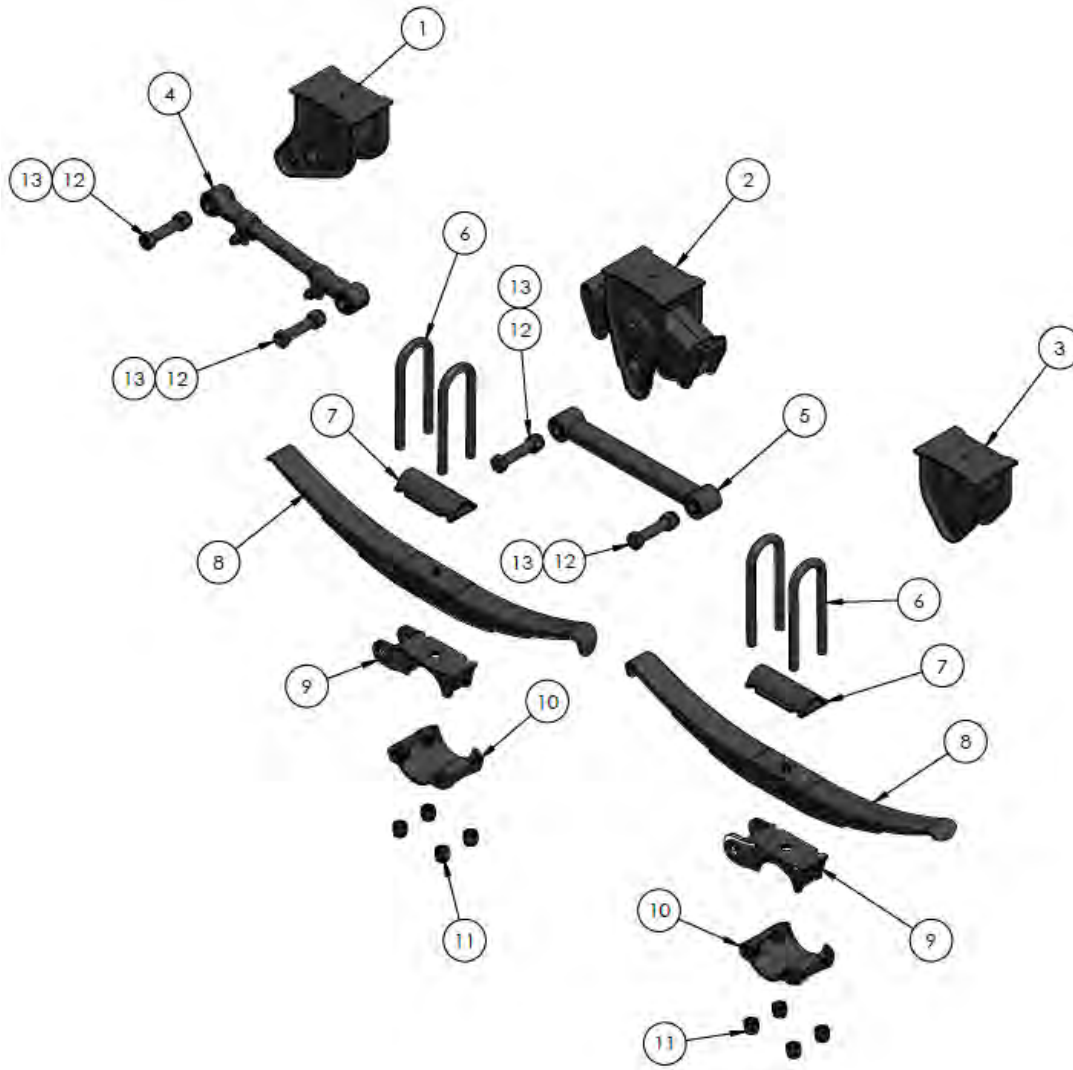
AVOID MEASURING TO RIMS, SUSPENSION BRACKETS, HUB CAP VENT HOLES, BRAKE DRUMS AND THE LIKE. THIS CAN RESULT IN IMPROPER ALIGNMENT.

IF DIFFICULTY IS ENCOUNTERED IN OBTAINING TRUE ALIGNMENT, CHECK & REPAIR OR REPLACE PROBLEM SUSPENSION PARTS.

ALWAYS ALIGN ANY SUCCEEDING AXLES WITH THE FRONT AXLE, NOT THE KINGPIN.



## SUSPENSION COMPONENTS



ITEM NO	PART NUMBER	DESCRIPTION
1	FH66-0100	FRONT HANGER
2	FH66-0200	MIDDLE HANGER
3	FH66-0300	REAR HANGER
4	FH66-0504/350	ADJ. RADIUS ROD
5	FH66-0515/480	FIXED RADIUS ROD
6	FH66-0509	U BOLT
7	FH66-0506	SPRING SEAT

ITEM NO	PART NUMBER	DESCRIPTION
8	17-PRT-AJ756	LEAF SPRING—LOW ARCH
9	FH66-0507	AXLE SEAT
10	FH66-0508	SPRING CLAMP PLATE
11	FH66-0510	U BOLT NUT
12	FH66-0514	RADIUS ROD BOLT
13	FH66-0520	RADIUS ROD NUT



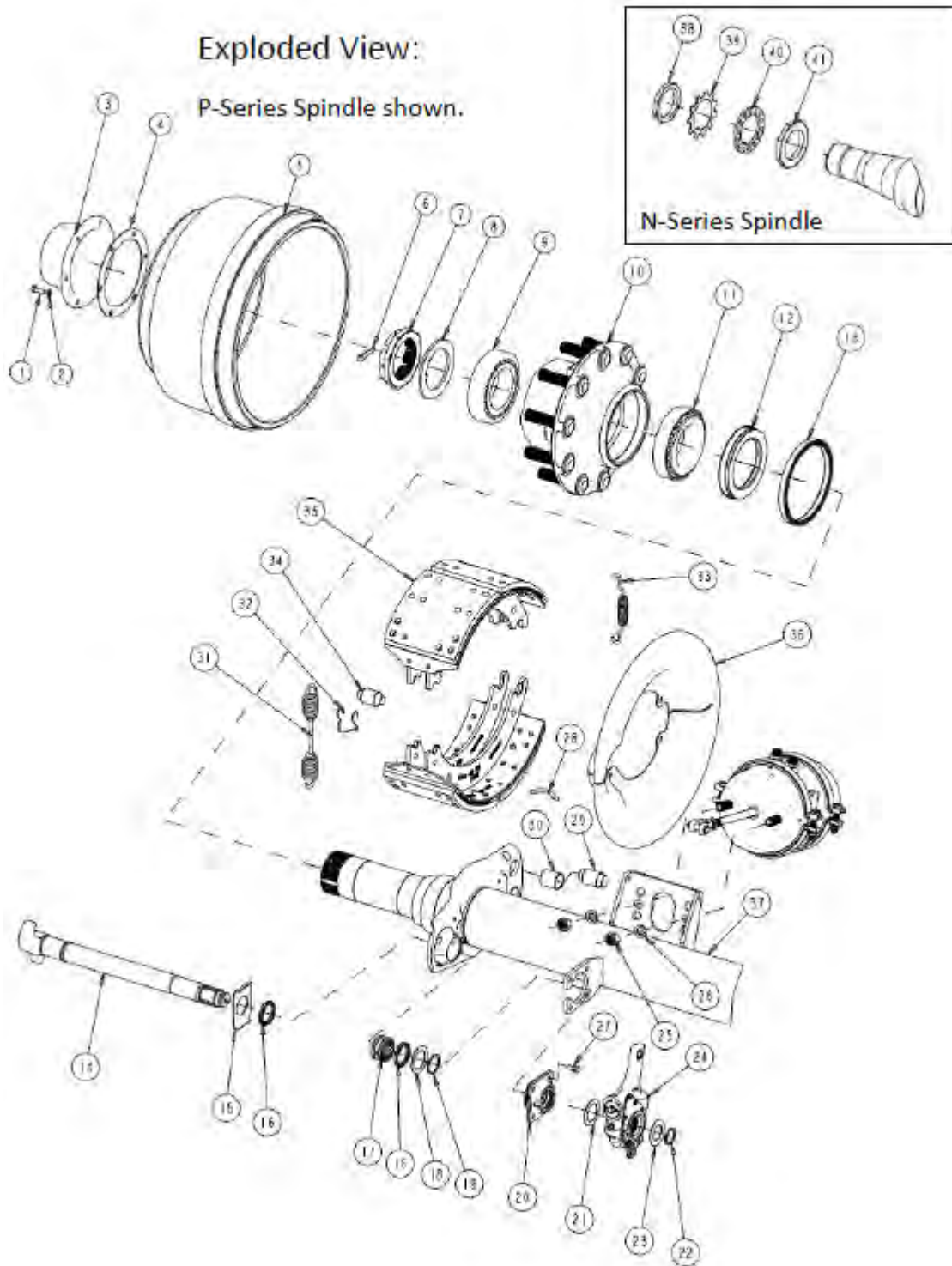
# AXLES



	AFTER FIRST 3,000 MILES OR AFTER FIRST MONTH	EVERY 10,000 MILES OR EVERY MONTH	EVERY 50,000 MILES OR EVERY SIX MONTHS	EVERY 100,000 MILES OR EVERY TWELVE MONTHS
CHECK BRAKE LININGS FOR WEAR	X	X		
CHECK BRAKE LINING TO DRUM CLEARANCE	X	X		
CHECK S-CAMSHAFT FOR PROPER OPERATION	X	X		
LUBRICATE S-CAMSHAFT BEARING BUSHINGS	X	X		
CHECK SLACK ADJUSTERS FOR CORRECT FUNCTION	X	X		
CHECK AIR BRAKE SYSTEM FOR LEAKS	X	X		
CHECK SERVICE & PARKING BRAKE PERFORMANCE	X	X		
CHECK AXLE COMPONENTS FOR CRACKS OR DAMAGE	X	X		
CHECK HUB LUBRICATION LEVEL OR EXCESSIVE LEAKAGE	X	X		
PACK HUB BEARINGS WITH FRESH LUBRICANT				X
CHECK WHEEL BEARING END PLAY	X		X	
CHECK TORQUE OF ALL NUTS & BOLTS	X		X	



# AXLE COMPONENTS



## AXLE COMPONENTS

Item	Description
1	Capscrew - Hubcap
2	Lock Washer - Hubcap
3	Hubcap
4	Gasket
5	Brake Drum
6	Cotter Pin
7	Castellated Nut
8	Lock Washer - Spindle
38	Outer Jam Nut
39	Lock Washer
40	Inner Jam Nut Washer
41	Inner Jam Nut
9	Outer Wheel Bearing - Cup and Cone
10	Hub
11	Inner Wheel Bearing - Cup and Cone
12	Wheel Bearing Seal
13	ABS Sensor Ring
14	Camshaft
15	Washer - Spider End
16	Seal - Spider End
17	Bushing - Spider End
18	Washer - Spider End
19	Snap Ring - Spider End
20	Bushing Assembly
21	Washer - Slack Adjuster
22	Snap Ring - Slack Adjuster
23	Washer - Slack Adjuster
24	Automatic Slack Adjuster
25	Lock Nut - Air Chamber
26	Lock Washer - Air Chamber
27	Capscrew - Camshaft Bushing Assembly
28	Brake Shoe Return Spring Pin
29	Anchor Pin

Item	Description
30	Anchor Pin Bushing
31	Brake Shoe Return Spring
32	Brake Shoe Roller Retainer
33	Brake Shoe Retaining Spring
34	Brake Shoe Roller
35	Brake Shoe and Lining Assembly
36	Dust Shield
37	Axle Beam



## RIM & TIRES



### VISUAL INSPECTION

*BEFORE EACH OPERATION*

- SEVERE RUST OR CORROSION
- METAL CRACKS
- BENT FLANGES
- RUST STREAKS BEHIND LUG NUTS
- DEEP TOOL MARKS ON RINGS OR IN GUTTER AREAS
- LOOSE, MISSING, OR DAMAGED NUTS
- PUNCTURES OR BULGES
- ADNORMAL TIRE PRESSURE
- EXCESSIVE WEAR
- DRY ROTTING RUBBER

## **DANGER**

**LOOSE OR MISSING LUG NUTS, CRACKED WHEELS ARE EXTREMELY DANGEROUS AND CAN RESULT IN WHEEL LOSS, SERIOUS INJURY, PROPERTY DAMAGE OR EVEN DEATH**

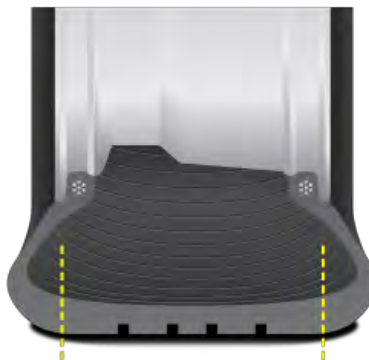


# RIM & TIRES

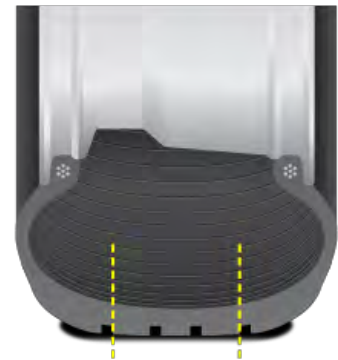
## TIRE PRESSURE INSPECTION



**Proper inflation**



**Underinflation**



**Overinflation**

CHECK TIRE PRESSURE WHEN TIRES ARE COOL. DURING NORMAL OPERATION TIRE TEMPERATURES INCREASE. HIGHER PRESSURES MAY BE A SIGN OF OVERLOADING, UNDER INFLATION, EXCESSIVE SPEED, IMPROPER TIRE SIZE, OR A COMBINATION OF THESE FACTORS. WHEN THESE SIGNS ARE PRESENT, DETERMINE THE CAUSE & CORRECT.

USING A RELIABLE TIRE PRESSURE GAUGE, INSPECT ALL TIRES BEFORE EACH OPERATION OF THE CHASSIS, ONCE A WEEK, OR WHEN UNDER INFLATION OCCURS.

INFLATE TIRES TO THE RECOMMENDED PRESSURE USING CAUTION TO NOT EXCEED THE MAXIMUM PRESSURE MOLDED INTO THE SIDEWALL OF THE TIRE.

ALWAYS USE CLEAN DRY AIR TO INFLATE TIRES.

ALWAYS USE VALVE STEM CAPS.

AFTER MOUNTING A NEW TIRE, RECHECK TIRE PRESSURE AFTER 48 HOURS.

### AUTOMATIC TIRE INFLATION SYSTEMS

CHASSIS EQUIPPED WITH AN AUTOMATIC TIRE INFLATION SYSTEM WILL HAVE AN INDICATOR LIGHT MOUNTED ON THE ROADSIDE OF THE FRONT BOLSTER.

WHEN STARTING THE VEHICLE, THE INDICATOR LIGHT WILL COME ON WHILE THE AIR SYSTEM IS CHARGING. HOWEVER, IF THE LIGHT STAYS ON FOR MORE THAN TEN MINUTES, A TIRE MAY BE DAMAGED. INSPECT ALL TIRES FOR DAMAGE OR AIR LEAKS.

## **CAUTION**

**INFLATE TIRES ONLY TO THE MANUFACTURE'S RECOMMENDED AIR PRESSURES. OVER & UNDER INFLATED TIRES COULD LEAD TO AN ACCIDENT**





# TIRE INFLATION SYSTEM



A CHASSIS EQUIPPED WITH A TIRE INFLATION SYSTEM WILL FEATURE A CLEAR WARNING LIGHT MOUNTED ON THE CURBSIDE OF THE FRONT BOLSTER.

THE MERITOR TIRE INFLATION SYSTEM (MTIS) BY P.S.I. USES COMPRESSED AIR FROM THE TRAILER TO INFLATE ANY TIRE THAT FALLS BELOW THE SYSTEM AIR PRESSURE SETTING DURING OPERATION. AIR FROM THE EXISTING TRAILER SUPPLY IS ROUTED TO A CONTROL BOX, THEN INTO EACH AXLE. THE AXLES ACT AS CONDUITS TO DISTRIBUTE AIR THROUGH ROTARY UNION ASSEMBLIES AT THE SPINDLE ENDS, WHICH THEN DISTRIBUTES AIR TO EACH TIRE AS NEEDED. IF A TIRE IS LEAKING, CHECK VALVES IN THE TIRE DELIVERY LINES PREVENT LOSS OF PRESSURE IN THE REMAINING TIRES.

THE MTIS WARNING LIGHT WILL COME ON TO ALERT YOU IF THERE IS AN EXCESSIVE AMOUNT OF AIR FLOW THROUGH THE SYSTEM, WHICH CAN BE CAUSED BY A LEAKING TIRE OR A LOOSE CONNECTION, OR BOTH. IF THE WARNING LIGHT COMES ON DURING OPERATION, IMMEDIATELY FIND A SAFE PLACE TO BRING THE TRACTOR & TRAILER TO A COMPLETE STOP. YOU MUST REPAIR COMPONENTS THAT CAUSED THE AIR LEAK BEFORE RETURNING THE VEHICLE TO SERVICE.

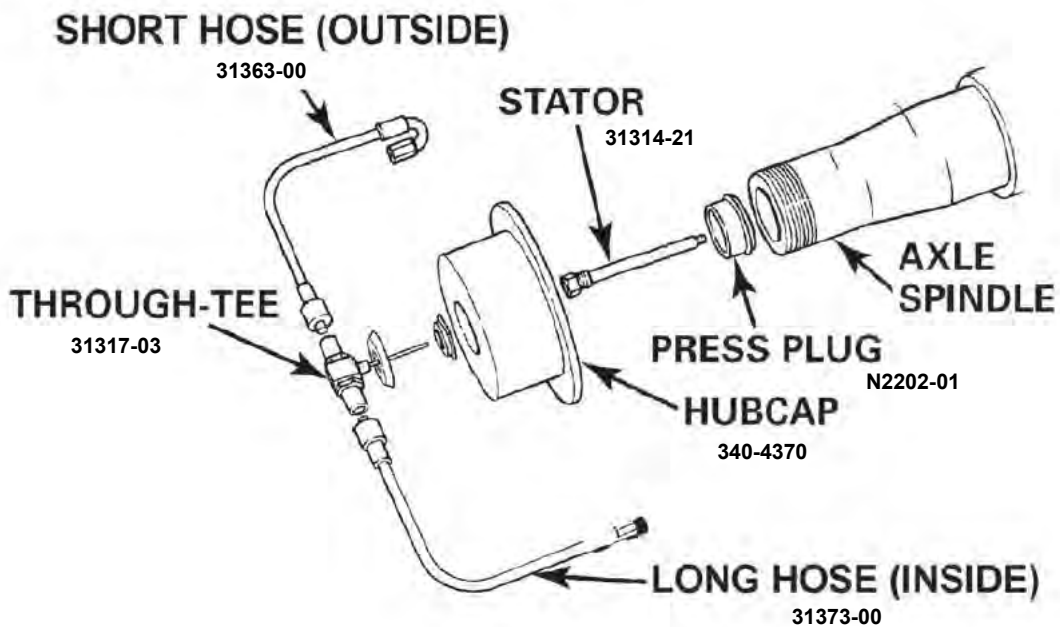
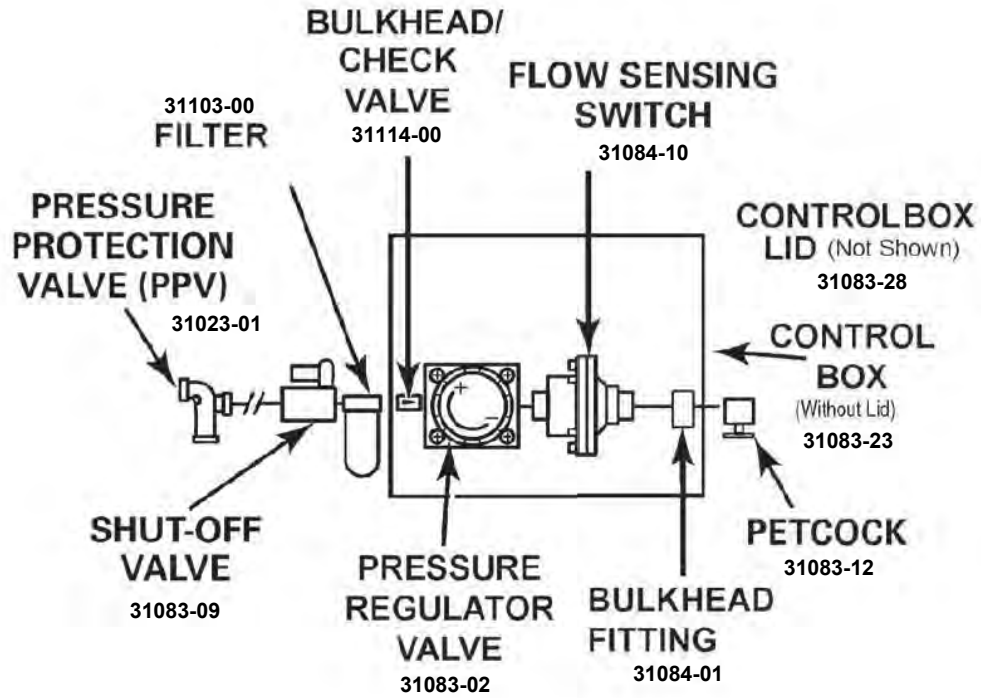
WHEN YOU START THE VEHICLE, THE MTIS WARNING LIGHT INITIALLY MAY COME ON WHILE THE AIR SYSTEM IS CHARGING. HOWEVER, IF THE WARNING LIGHT STAYS ON FOR MORE THAN 10 MINUTES, A TIRE MAY BE DAMAGED & LOSING AIR PRESSURE. INSPECT THE TIRES FOR DAMAGE & AIR LEAKS.

## WARNING

TIRE INFLATION SYSTEMS DO NOT ELIMINATE THE NEED TO PERFORM TIRE INSPECTIONS AT REGULARLY-SCHEDULED INTERVALS.



# TIRE INFLATION SYSTEM COMPONENTS



# LANDING GEAR



<b>VISUAL INSPECTION</b> <i>BEFORE EACH OPERATION</i>	<ul style="list-style-type: none"><li>• MISSING COMPONENTS</li><li>• FASTENERS</li><li>• CRACKED WELDS</li><li>• CRACKED METAL</li></ul>
<b>LUBRICATION</b>	<ul style="list-style-type: none"><li>• EVERY THREE MONTHS AFTER MANUFACTURE'S STATED MAINTENANCE FREE PERIOD.</li></ul>
<b>PERIODIC INSPECTION</b> <i>EVERY SIX MONTHS</i>	<ul style="list-style-type: none"><li>• ALL FASTENERS SHOULD BE CHECKED TO ENSURE THAT RECOMMENDED TORQUE VALUES ARE BEING MAINTAINED.</li></ul>

## WARNING

FAILURE TO CHECK THE CONDITION OF THE LANDING GEAR COULD RESULT IN DEATH OR SERIOUS INJURY.



# LANDING GEAR

## JOST A440

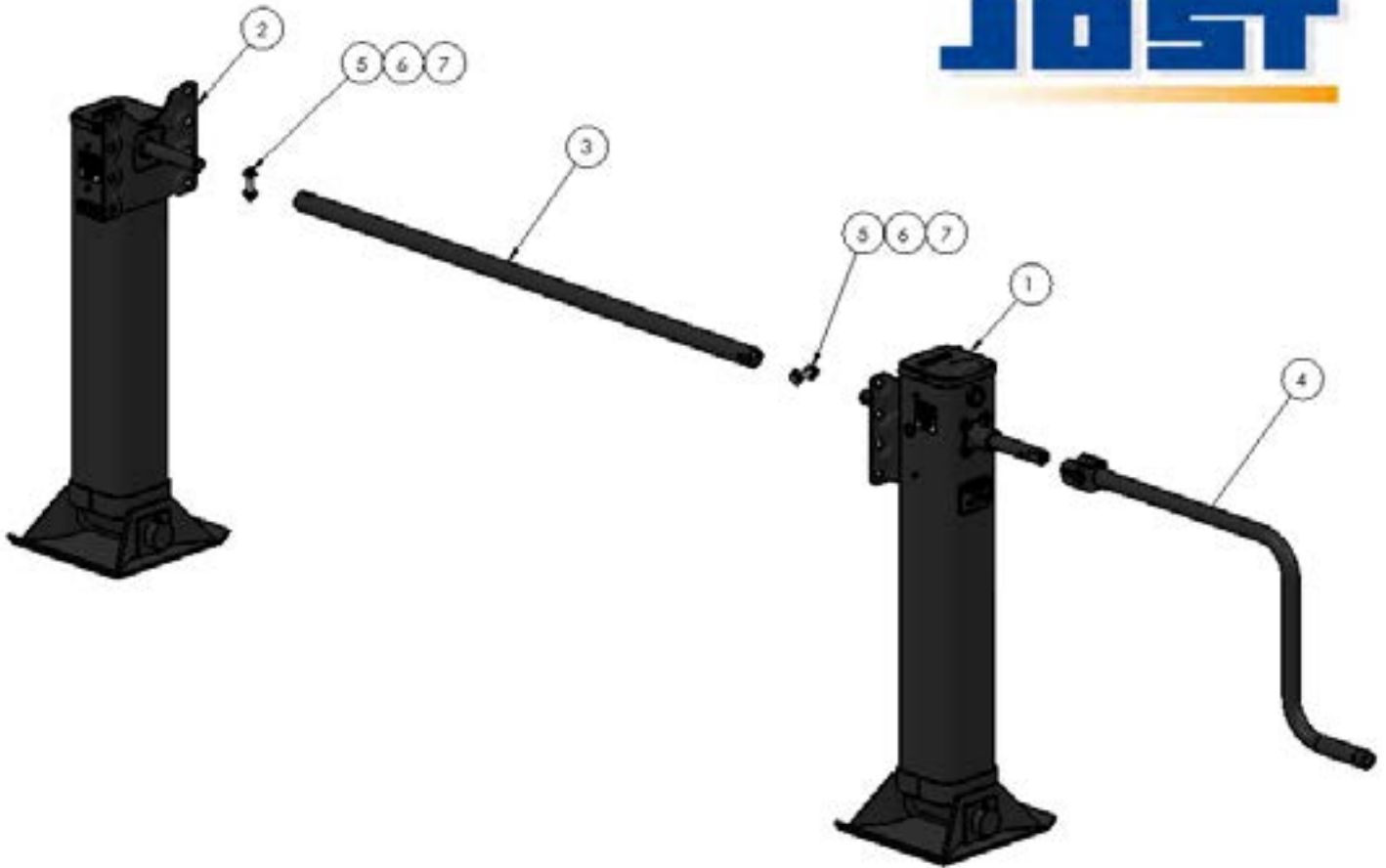


ITEM NO	PART NUMBER	DESCRIPTION	QTY	UOM
1	A.440L.T1.19	LANDING GEAR LEG, ROADSIDE	1	EA
2	A.440R.T1.19	LANDING GEAR LEG, CURBSIDE	1	EA
3	B10066.44.4	CROSS SHAFT	1	EA
4	C10592.2	CRANK HANDLE	1	EA
5	2390	BOLT, HEX HEAD, 3/8"-16 X 2" LG. GR5	2	EA
6	2403	WASHER, PLAIN 3/8"	4	EA
7	2395	NUT, NYLON LOCK, 3/8"-16	2	EA



# LANDING GEAR

## JOST A400



ITEM NO	PART NUMBER	DESCRIPTION	QTY	UOM
1	A.400L.T1.19	LANDING GEAR LEG, ROADSIDE	1	EA
2	A.400R.T1.19	LANDING GEAR LEG, CURBSIDE	1	EA
3	B10066.44.4	CROSS SHAFT	1	EA
4	C10592.2	CRANK HANDLE	1	EA
5	2390	BOLT, HEX HEAD, 3/8"-16 X 2" LG. GR5	2	EA
6	2403	WASHER, PLAIN 3/8"	4	EA
7	2395	NUT, NYLON LOCK, 3/8"-16	2	EA



# LANDING GEAR

## AXN PRO50

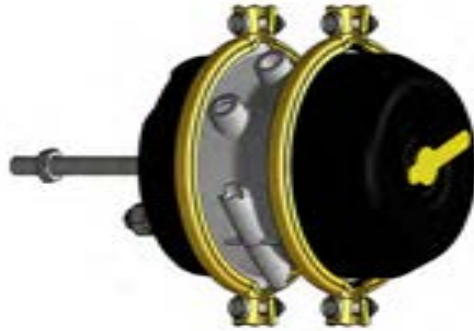


ITEM NO	PART NUMBER	DESCRIPTION	QTY	UOM
1	TLG50VC	LANDING GEAR LEG, ROADSIDE	1	EA
2	JE0013A1	LANDING GEAR LEG, CURBSIDE	1	EA
3	HS0040S1	CROSS SHAFT	1	EA
4	LGP-BV-18	CRANK HANDLE	1	EA
5	2390	BOLT, HEX HEAD, 3/8"-16 X 2" LG. GR5	2	EA
6	2403	WASHER, PLAIN 3/8"	4	EA
7	2395	NUT, NYLON LOCK, 3/8"-16	2	EA



# BRAKE SYSTEM

## BRAKE CHAMBER



### PERIODIC INSPECTION

*WHILE SERVICING OTHER COMPONENTS OR EVERY 50,000 MILES*

- MISSING COMPONENTS
- DAMAGE TO CAP
- EXTERIOR SURFACES FOR DAMAGE, CORROSION AND/OR RUST
- CLAMP RINGS ARE SECURED & NOT DAMAGED
- AIR LINES ATTACHED TO CHAMBER ARE NOT DAMAGED OR LEAKING
- PUSH-ROD IS SQUARE TO THE BOTTOM OF THE CHAMBER & IS FREE MOVING, NOT BENT, OR BINDING
- STROKE INDICATOR CAN NOT BE SEEN
- MOUNTING STUDS & JAM NUTS ARE TORQUED PROPERLY.

## DANGER

NEVER ATTEMPT TO DISASSEMBLE THE SPRING BRAKE CHAMBER WITHOUT THE VENDOR'S INSTRUCTIONS. SERIOUS INJURY OR DEATH COULD RESULT FROM SUDDEN RELEASE OF HIGH ENERGY SPRING.

### BRAKE CHAMBER TORQUE VALUES

FASTENER	TORQUE
BRAKE CHAMBER MOUNTING STUD	100-120 ft-lb
JAM NUT FOR CLEVIS ON PUSH-ROD	40-60 ft-lb



# BRAKE SYSTEM SLACK ADJUSTER



<p><b>PERIODIC INSPECTION</b></p> <p><i>EVERY MONTH, 8,000 MILES OR 300 OPERATING HOURS</i></p>	<ul style="list-style-type: none"> <li>• CHECK BRAKE CHAMBER PUSH ROD TRAVEL. CHAMBER STROKE SHOULD BE IN COMPLIANCE WITH THE MAXIMUM ALLOWABLE ADJUSTED STROKES WITHOUT THE BRAKES DRAGGING OR THE PUSH ROD BINDING.</li> </ul>
<p><b>PERIODIC INSPECTION</b></p> <p><i>EVERY SIX MONTHS, 50,000 MILES, OR 1,800 OPERATING HOURS</i></p>	<ul style="list-style-type: none"> <li>• LUBRICATE ALL SLACK ADJUSTERS &amp; CLEVIS PINS</li> <li>• CHECK FOR WORN CLEVISES &amp; CLEVIS PINS</li> <li>• CHECK FOR WORN OR BROKEN CONTROL ARMS</li> </ul>

MAXIMUM LEGAL STROKE @ 90-100 PSI APPLICATION PRESSURE	
CHAMBER TYPE	MAX STROKE
TYPE 30/30	2.0" OR LESS
TYPE 30/30 LONG STROKE	2.5" OR LESS

**CAUTION**

AUTOMATIC SLACK ADJUSTERS DO NOT ELIMATE OR REDUCE THE NEED FOR PERIODIC INSPECTION & MAINTENANCE.

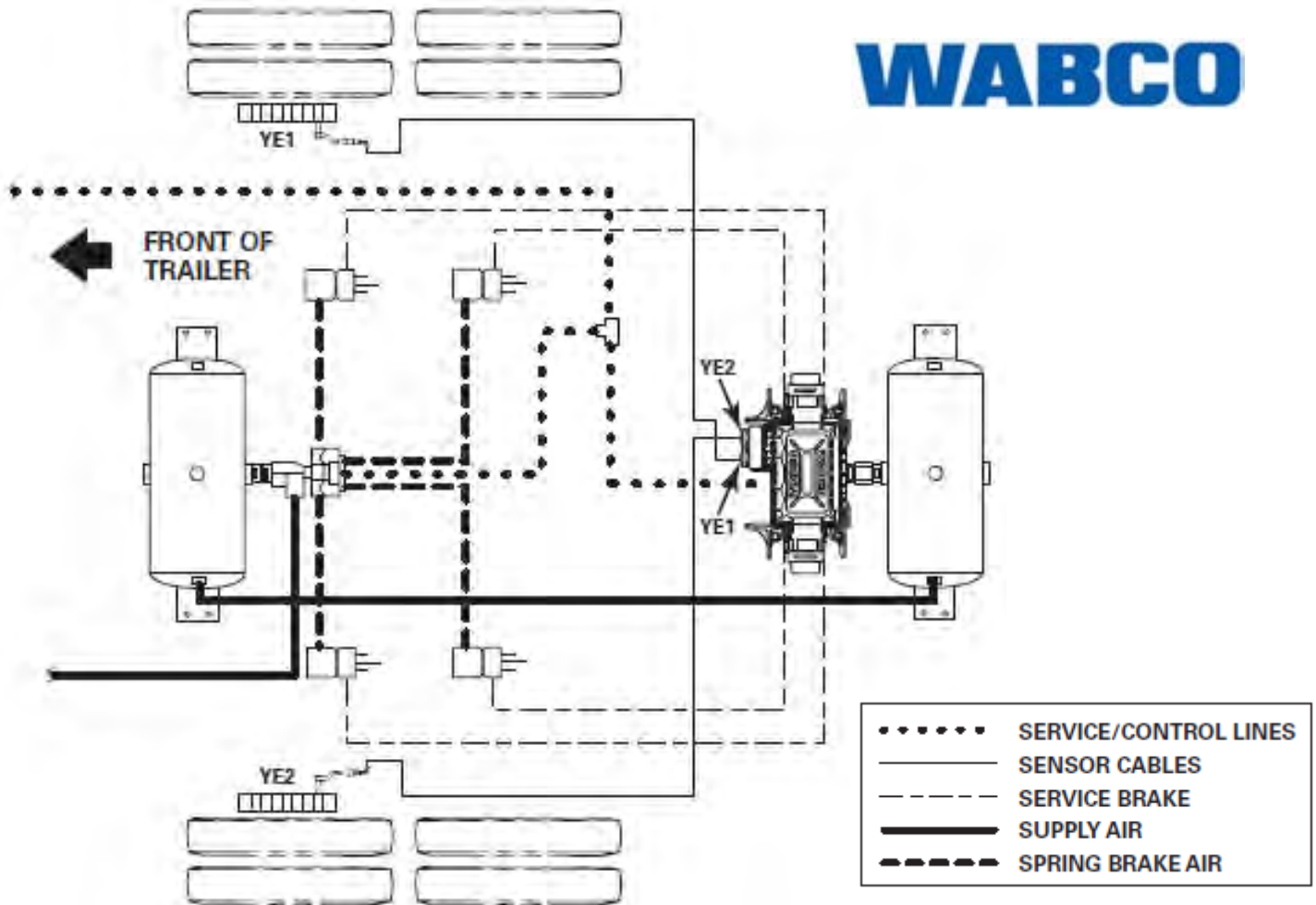
AUTOMATIC SLACK ADJUSTERS SHOULD NEVER BE OPERATED AS A MANUAL ADJUSTER.





# AIR BRAKE SCHEMATIC

**WABCO**



<p><b>VISUAL INSPECTION</b></p> <p><i>BEFORE EACH OPERATION</i></p>	<ul style="list-style-type: none"> <li>• CHECK CONNECTORS, SEALS, &amp; HOSES FOR CRACKS, MISSING SECTIONS, OR DAMAGE.</li> <li>• DRAIN THE AIR TANK OF WATER DAILY.</li> </ul>
<p><b>PERIODIC INSPECTION</b></p> <p><i>EVERY THREE MONTHS</i></p>	<ul style="list-style-type: none"> <li>• INSPECT COMPONENTS OF THE SYSTEM FOR DAMAGE</li> <li>• LISTEN FOR AIR LEAKS.</li> <li>• LOOK FOR SIGNS OF WEAR</li> <li>• KINKED, CRUSHED OR DAMAGE HOSES.</li> <li>• EXCESSIVE DIRT BUILD-UP</li> </ul>

**CAUTION**

RELEASE AIR PRESSURE FROM THE SYSTEM BEFORE STARTING ANY REPAIRS TO THE AIR BRAKE SYSTEM.



A Dorsey's More Durable

# ANTI-LOCK BRAKE SYSTEM

A CHASSIS EQUIPPED WITH ABS WILL FEATURE AN AMBER FAULT LIGHT MOUNTED ON THE CURDSIDE OF THE CHASSIS. THE ABS FAULT LIGHT SHOULD POWER ON DURING INITIAL START UP & THEN TURN OFF WITHIN A FEW SECONDS AFTER A SYSTEM SELF-CHECK IS PERFORMED.

- IF THE FAULT LIGHT DOES NOT COME ON AT ALL, REPLACE THE FAULT LIGHT.
- IF THE FAULT LIGHT COMES ON AND STAYS ON, EVEN AFTER PULLING THE CHASSIS FORWARD AT MORE THAN 4 MPH, THEN A FAULT EXISTS SOMEWHERE WITHIN THE ABS SYSTEM.
- IF THE FAULT LIGHT COMES ON AND STAYS ON DURING A TRIP, THE ABS PORTION OF THE BRAKE SYSTEM IS NOT WORKING. THE ABS MUST BE SERVICED AS SOON AS POSSIBLE UPON COMPLETING THE TRIP.

<b>WARNING</b>
<b>DO NOT WELD ON THE CHASSIS WHILE POWERING THE ABS SYSTEM.</b>

## WABCO BLINK CODE DIAGNOSTICS

IT IS IMPORTANT TO RECHECK THE BLINK CODES AFTER REPAIRING EACH FAULT. THE ABS UNIT ONLY DISPLAYS ONE BLINK CODE AT A TIME & WILL ONLY SHOW ADDITIONAL CODES AFTER THE FIRST ONE IS REPAIRED.

TO OBTAIN BLINK CODES USING IGNITION POWER ACTIVATION, PERFORM THE FOLLOWING PROCEDURE:

1. TURN THE IGNITION SWITCH ON FOR NO LONGER THAN 5 SECONDS. THE ABS FAULT LIGHT WILL BE ON.
2. TURN THE IGNITION SWITCH OFF. THE ABS FAULT LIGHT WILL GO OUT.
3. TURN THE IGNITION SWITCH ON. THE ABS FAULT LIGHT WILL COME ON, THEN GO OUT.
4. THE BLINK CODE WILL BE DISPLAYED THREE TIME BY THE ABS FAULT LIGHT.

BLINK CODE	PROBLEM AREA	ACTION
3	SENSOR BU1	DETERMINE SENSOR LOCATION. CHECK SENSOR INSTALLATION. MAKE NECESSARY REPAIRS.
4	SENSOR YE1	
5	SENSOR BU2	
6	SENSOR YE2	
7	EXTERNAL ABS MODULATOR VALVE	VERIFY PROPER ELECTRICAL INSTALLATION. CHECK POWER SUPPLY. MAKE NECESSARY CORRECTIONS.
9	INTERNAL MODULATOR FAILURE, INLET VALVE #2	VERIFY PROPER INSTALLATION. IF CODE CONTINUES, CONTACT WABCO FOR ASSISTANCE.
10	INTERNAL MODULATOR FAILURE, INLET VALVE #1	
11	INTERNAL MODULATOR FAILURE, OUTLET VALVE	
14	POWER SUPPLY	
15	ECU FAILURE	
16	SAE J1708 FAILURE	INTERNAL FAILURE, CONTACT WABCO FOR ASSISTANCE.
17	SAE J2497 FAILURE	
18	GENERIC I/O FAILURE	VERIFY PROPER ELECTRICAL INSTALLATION. CHECK POWER SUPPLY. MAKE NECESSARY CORRECTIONS.



# BRAKE SYSTEM COMPONENTS



ABS ECU  
WABCO 2S/M1  
17-PRT-AJ548



WHEEL SPEED SENSOR  
WABCO—12"  
17-PRT-AJ548



EXTENSION CABLE  
WABCO—60"  
17-PRT-AJ552



POWER CABLE  
WABCO—1.65'  
17-PRT-AJ550



AIR TANK  
HOOSIER—12" DIAMETER  
17-PRT-AG093



PARKING BRAKE VALVE  
SEALCO  
17-PRT-AK661



GLADHAND  
GROTE  
SERVICE: 17-PRT-AK830  
EMERGENCY: 17-PRT-AK831



DRAIN VALVE  
GROTE  
17-PRT-AF521



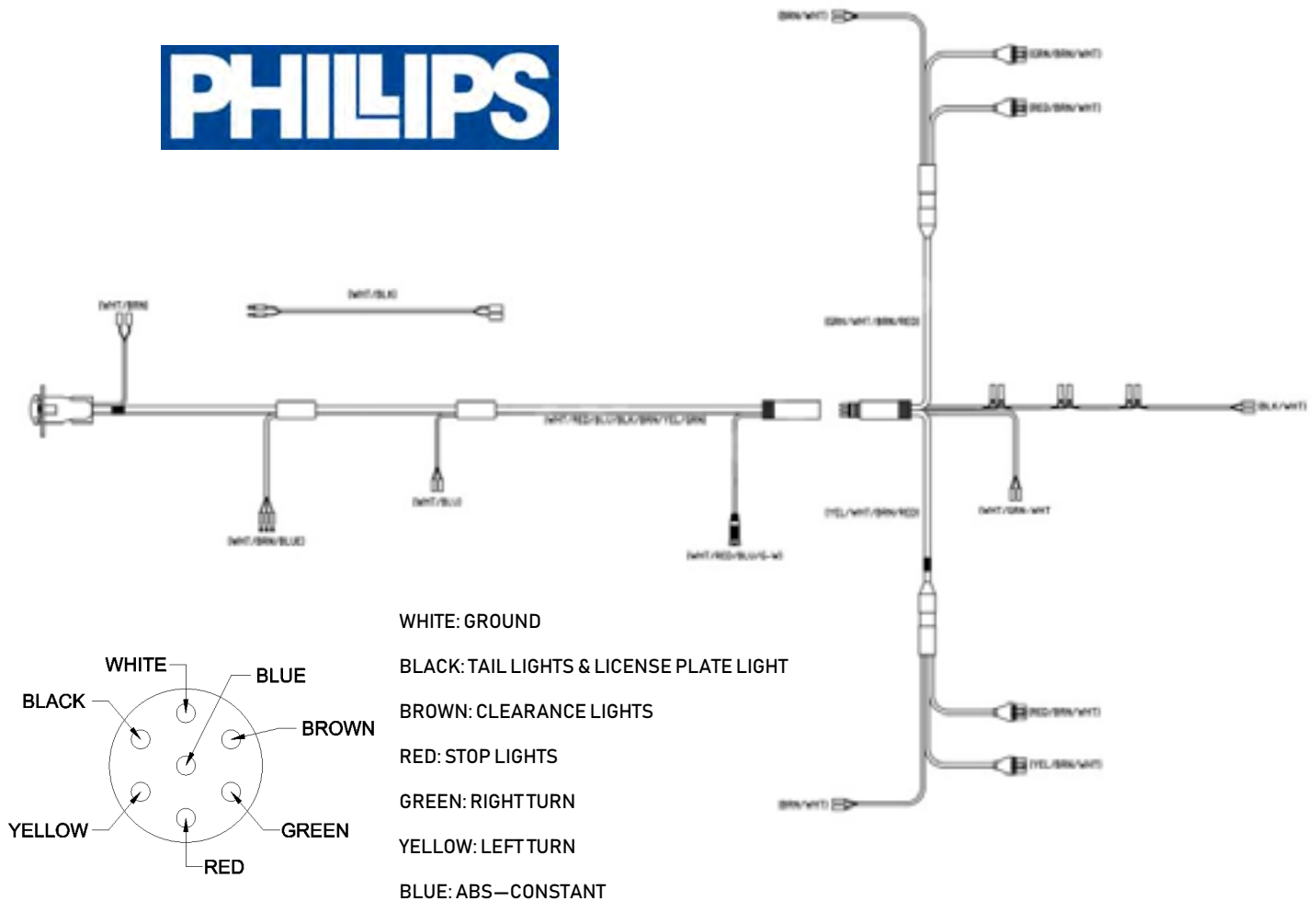
BRAKE HOSE  
TRAMEC SOLAN  
24": 1068  
60": 1061



3/8" BRAKETUBING  
GROTE  
RED: 1038R  
BLUE: 1038B



# ELECTRICAL SYSTEM



## PERIODIC INSPECTION

### WHILE SERVICING OTHER COMPONENTS

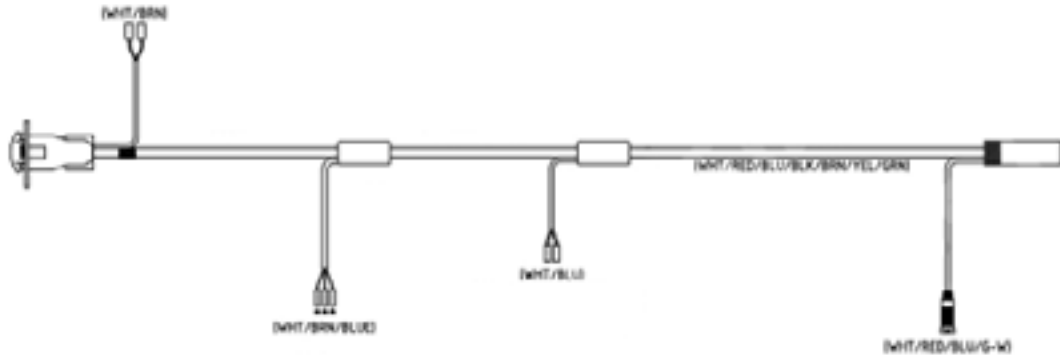
- INSPECT ALL WIRING TO SEE THAT IT IS NOT DAMAGED, PROPERLY SUPPORTED & PROTECTED, & ALL CONNECTIONS ARE TIGHT.

IF ANY LIGHT IS NOT WORKING USE THE FOLLOWING PROCEDURE:

1. CHECK POWER AT 7-WAY PLUG & INSPECT FOR DAMAGE & CORROSION.
2. INSPECT THE MAIN HARNESS FOR DAMAGE. & CORROSION.
3. CHECK POWER AT REAR SILL. START WITH CHECKING CONNECTORS AT THE TAIL LIGHTS. IF NO POWER, THEN CHECK WHERE THE REAR SILL CONNECTS TO THE MAIN HARNESS.
4. CHECK FOR UNPLUGGED WIRES & CONNECTORS.



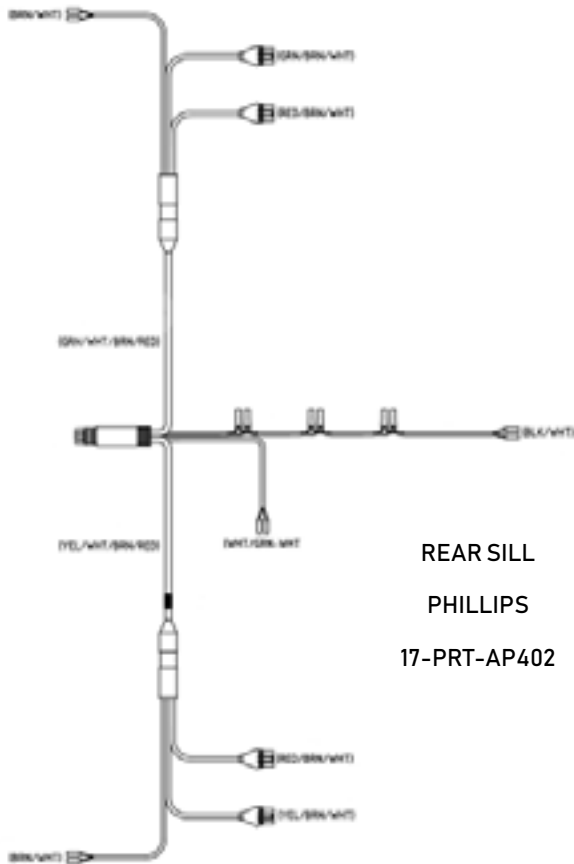
# ELECTRICAL SYSTEM COMPONENTS



MAIN HARNESS

PHILLIPS

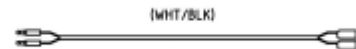
17-PRT-AP401



REAR SILL

PHILLIPS

17-PRT-AP402



JUMPER HARNESS

PHILLIPS

24": 17-PRT-AP118

48": 17-PRT-AP403

60": 17-PRT-AP119



# LIGHTING



STOP/TAIL/TURN  
4" ROUND SINGLE DIODE  
17-PRT-AN887



CLEARNACE—RED  
3/4" DOT SINGLE DIODE  
17-PRT-AN885



CLEARNACE—AMBER  
3/4" DOT SINGLE DIODE  
17-PRT-AN884



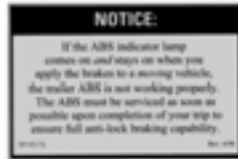
LICENSE  
3/4" DOT SINGLE DIODE  
17-PRT-AN888



## DECAL



17-PRT-AP020



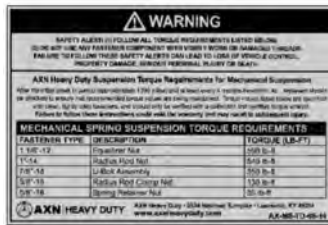
17-PRT-AK005



17-PRT-AP017



1520



17-PRT-AK004



1503

**100% U.S. STEEL**

WHITE: 17-PRT-AN887

BLACK: 17-PRT-AP061

**TARE WT 6,900 LBS**

WHITE: 17-PRT-AN887

BLACK: 17-PRT-AP016

**ABS**

YELLOW: 17-PRT-AF398

BLACK: 17-PRT-AN570



STRIP: 17-PRT-AF953

ROLL: 17-PRT-AF965



AMBER: 17-PRT-AP018

RED: 17-PRT-AP019



RED 4.5X9": 17-PRT-AN377

RED 6X12": 17-PRT-AN464

BLACK 4.5X9": 17-PRT-AN378

BLACK 6X12": 17-PRT-AN465



A Dorsey's More Durable



Division of Pitts Enterprises  
Certificate of Warranty  
New Truck Trailers

Dorsey Intermodal ("Dorsey") warrants to the first purchaser ("the Purchaser") of a new truck trailer (hereinafter referred to as "trailer") manufactured by Dorsey that each such new trailer will be free from defects in material and workmanship, provided that the trailer (i) is operated for normal commercial use, (ii) is periodically serviced in accordance with ordinary commercial standards, (iii) is used to carry loads not exceeding the manufacturer's rated capacity, and (iv) is loaded with the weight equally distributed. The foregoing warranty is effective from the date of purchase for the period of: (i) limited three years for van models, (ii) limited five years platform models, (iii) one year for chip van models, (iv) one year for extendable models, (v) one year for custom models, (vi) one year on chassis models, and (vii) six months on hydraulic and solenoid components.

**THE FOREGOING WARRANTY IS MADE SOLELY TO THE FIRST PURCHASER OF A NEW TRUCK TRAILER FROM DORSEY OR DORSEY'S AUTHORIZED DEALER AND IS MADE IN LIEU OF OTHER WARRANTIES, WHETHER EXPRESS OR IMPLIED BY LAW OR OTHERWISE, NO EXPRESS OR IMPLIED WARRANTY OF MERCHANTABILITY AND FITNESS FOR A PARTICULAR PURPOSE OTHER THAN AS SET FORTH ABOVE IS MADE BY DORSEY FOR EACH SUCH NEW TRUCK TRAILER.**

"Normal commercial use" means use of the trailer (i) for commercial use, (ii) in the manner and for the purpose for which it was designed and purchased, (iii) within gross vehicle rating (GVWR) and gross-axle rating (GAWR) as specified on the trailer's vehicle identification plate, and (iv) with commercial loads properly attached and not causing any strains on the trailer greater than those experienced on well maintained public roads while operated lawfully. "Normal commercial use" shall NOT include use with loads that are chemically incompatible with any of the materials of which the trailer is constructed.

Main frame - Limited Five Year - - - Tail Roller/Pop Up Roller - 1 Year Warranty - - - - Suspension - See Mand. Warranty - - - Paint - 1 Year - - - Alignment - 30 Days

**ALL WARRANTIES MUST BE PRE-APPROVED BEFORE ATTEMPTING ANY REPAIRS OR VOID'S WARRANTY CLAIM. OVERLOADING, NEGLIGENCE, MISUSE, UNAUTHORIZED REPAIR, ALTERATIONS, OR FAILURE TO PROVIDE NORMAL MAINTENANCE SHALL VOID WARRANTY.**

Dorsey neither expresses nor implies any warranty at all with respect to:

1. any trailer no longer owned by the Purchaser;
2. any trailer sold which, after its purchase from Dorsey, or Dorsey authorized dealer, is repaired or altered outside of Dorsey's factory or branch in any manner not approved in writing, or which has been subject to misuse, neglect, or accident;
3. any used trailer sold by Dorsey or any other person;
4. any parts or materials used by Dorsey in manufacturing a new trailer which wear out and require replacement within the warranty period specified above. Such parts or materials include (but are not limited to) brake drums, brake linings, brake actuation components, oil and oil seals, bearings, pins, wood floors, and electrical components, light bulbs, electrical receptacle, paint and coatings, return springs, equalizer, torque rod and camshaft bushings, camshafts, slack adjusters, springs, slider pads, wheel bearings, rim clamps and studs, gaskets and sealers, and all types of interior lining, floors, and the like also;
5. parts and accessories may carry warranties of their respective manufacturers. At the Purchaser's written request, Dorsey will supply the Purchaser with any information it possesses concerning the warranties on parts and accessories and the identity and location of their respective manufacturers or of any other person with respect to the parts and accessories;
6. customer furnished used parts for installation in new trailers;

By Dorsey's delivery of this warranty and Purchaser's acceptance hereof in connection with the purchase of a new trailer, Dorsey and the Purchaser agree as follows:

1. that Dorsey shall not be liable for damage to cargo or for any consequential damages arising from or alleged to arise from the purchase covered by this Warranty or from the Warranty itself, whether arising from or alleged to arise from Purchaser's inability to use trailer commercially, from interruption of Purchaser's business, or otherwise for loss of use of capital or revenue, cost of money, claim of customers, non-operation or increased expense or operation cost of purchase or replacement equipment, loss of anticipated profits, transportation expenses due to repairs, or for any special, incidental or consequential loss or damage of any nature arising at any time or from any cause whatsoever;
2. that Dorsey's sole responsibility under this warranty is to repair or replace (at Dorsey's discretion, but only within the Warranty period) any defective trailer manufactured by Dorsey, provided that Dorsey is obliged to perform such repair or replacement only if such defective trailer is returned to Dorsey or a repair facility designated by Dorsey, at Purchaser's expense immediately upon request by Dorsey;
3. the labor cost involved in replacing the warranted parts will be reimbursed for a period of one year, and a period of six months on hydraulic components and solenoids, at a rate not exceeding their predetermined factory schedule for such labor and labor cost, providing the prior approval of Dorsey Intermodal for any such labor and labor cost has been obtained. The necessity of replacement of any such parts under this warranty shall solely be determined by Dorsey Intermodal, who reserves the right to require any and all parts for which replacement is claimed, to be returned freight paid to its factory for inspection. On all component parts not manufactured by Dorsey Trailer, their warranty is to the extent that the manufacturers of such parts warrant them to Dorsey Intermodal, and
4. that such repair or replacement is the Purchaser's exclusive and sole remedy in connection with any defective trailer sold new to the Purchaser by Dorsey, whether such remedy is sought pursuant to this Warranty, or otherwise;
5. the provisions of this warranty shall be interpreted and governed pursuant to the laws of the state of Alabama;
6. axle and/or suspension alignment: Dorsey Intermodal or authorized dealership must be called within 30 days after delivery of any alignment problem.

Any communications with respect to the New Truck Trailer Warranty are to be in writing and addressed to:  
**Dorsey Intermodal, Warranty Claims Department, 1515 Hickman Avenue, Eiba, AL 35325.**

Trailer Serial Number: \_\_\_\_\_

Date Trailer Sold: \_\_\_\_\_



**A Dorsey's More Durable**





Warranty Registration

Warranty registration MUST be completed and sent in within 30 days of first retail purchase or the warranty is VOID.

Dealer Name: \_\_\_\_\_

Date Trailer Sold: \_\_\_\_\_

Dealer Address Line 1: \_\_\_\_\_

Dealer Address Line 2: \_\_\_\_\_

City: \_\_\_\_\_

State: \_\_\_\_\_ Zip: \_\_\_\_\_

Purchaser (Print Name): \_\_\_\_\_

Purchaser (Signature): \_\_\_\_\_

Purchaser Address Line 1: \_\_\_\_\_

Purchaser Address Line 2: \_\_\_\_\_

City: \_\_\_\_\_

State: \_\_\_\_\_ Zip: \_\_\_\_\_

Phone: \_\_\_\_\_

Fax: \_\_\_\_\_

email: \_\_\_\_\_

Vin Number: \_\_\_\_\_

Model Number: \_\_\_\_\_

Please mail, email or fax this registration to:  
Warranty Registration Department, 1315 Hickman Avenue, Elba, AL 36323  
Fax: 334-897-2526 or e-mail: randi@dorseytrailer.net

ALL WARRANTY WORK MUST BE APPROVED PRIOR TO THE WORK BEING PERFORMED





Warranty Claim Form

HOW TO FILE A CLAIM

- 1. Notify Dorsey's Warranty Administrator at 334-855-4754 ext. 233 or Fax 334-855-3507 or email randi@dorseytrailer.net immediately upon discovery of a defect.
2. Provide the following information:
a. Serial number of the equipment
b. Name of company submitting claim
c. A complete description of the problem
d. Photographs of problem area, where applicable.
e. Name of two proposed repair shops and copies of their repair estimates
f. Location of equipment so it can be inspected
3. If the claim is approved under the terms of this warranty, Dorsey will issue a claim number which must appear on all invoices submitted.
4. Dorsey may require that the equipment, or certain parts or components, be returned to our Pittsview, Alabama office, a Dorsey affiliate, or a designated service shop at purchaser's expense. Replacement parts will be furnished, conditions permitting, if Dorsey or the parts manufacturer determines part to be defective.
5. All warranty work must be performed at the location designated or approved by the Dorsey Warranty Administrator. Warranty coverage is limited to work specifically authorized.
6. Any unauthorized work or parts appearing on an invoice filed in connection with a warranty claim will not be paid by Dorsey and may delay processing the remainder of the claim. Work performed without prior authorization of the warranty administrator will not be paid under any circumstances.
7. Labor time will be determined from the shop manual, not to exceed \$60.00 per hour.
8. Return Parts to: Pitts Enterprises, Attn: Warranty Administrator, 5734 Old Seale Hwy, Pittsview, AL 36871 at Phone 334-855-4754 ext. 203 or Fax 334-855-3507.

\*\*\* PLEASE CALL WARRANTY ADMINISTRATOR BEFORE ATTEMPTING ANY REPAIRS. \*\*\*

Trailer Serial Number: \_\_\_\_\_

Date Trailer Sold: \_\_\_\_\_

Date of Claim: \_\_\_\_\_

Owner Name: \_\_\_\_\_

Address Line 1: \_\_\_\_\_

Address Line 2: \_\_\_\_\_

City: \_\_\_\_\_

State: \_\_\_\_\_ Zip: \_\_\_\_\_

Phone: \_\_\_\_\_

Fax: \_\_\_\_\_

DESCRIPTION OF REPAIR OR REPLACEMENT

Table with 5 columns: Part Number, Part Description, Quantity, Unit Cost, Total Cost. It contains three empty rows for data entry.

Labor Hours: \_\_\_\_\_ Labor Rate: \_\_\_\_\_ Total Material Cost: \_\_\_\_\_

Total Labor Cost: \_\_\_\_\_ Total Cost of Claim: \_\_\_\_\_ Claim Number: \_\_\_\_\_





*A Dorsey's More Durable*